



Celebrate Spanish culture

THE Spanish Department is proud to announce its first big event at WLA! The 'Spanish Culture Morning' will involve a series of workshops focusing on aspects of Spanish culture, specifically Flamenco music and dancing. A professional performer has been invited to the Academy for one of the sessions, and the Arts and Drama Departments will be holding two other workshops that complement the occasion. 30 gifted and dedicated students have been selected to participate, so if you have been chosen you really should be proud of yourself! However, if you haven't been selected, don't worry - make sure you work hard next year for a chance to participate! Watch this space for more exciting events next year!



The Spanish Culture Morning will be held on July 10, starting at 8.45am, finishing at 12:15pm.

SCIENCE CORNER

WITH PROFESSOR WEEKLY



Good Morning Class!
Time for your weekly quiz again!
As always get your answers into Mr Gaza by Wednesday for your chance to win a fantastic prize at the end of term!

1. Principal root.
2. An alcohol present in beer, wine and spirits.
3. Animals that are active at night are called this.
4. Energy generated from disintegrating atoms.
5. A disease that spreads rapidly through a populations.
6. Energy from the sun



Your clue for this week is:

1	2	3	4	5	6
T	E	N	N	I	S

GOOD LUCK!

Last week's answers - 1: Membrane 2: Uranus 3: Rust 4: Root 5: Alkali 6: Yeast

GEOGRAPHY QUIZ

MOUNTAIN RANGE IS FOUND IN BOTH COUNTRIES?

4. THE CAPITAL CITY OF AUSTRIA IS ON THE LONGEST RIVER IN EUROPE, NAME THE CITY AND THE RIVER,
5. WHAT IS THE JUNGFRAU AND WHICH COUNTRY IS IT IN?

FIRST CORRECT ANSWERS TO MR BROWN WIN A PRIZE,

LAST WEEKS WINNER WAS IVNEET KHANEJA WHO WON A LARGE BAR OF DAIRY MILK!

LAST WEEKS ANSWERS:

1. DEEPEST POINT IN THE OCEAN = MARIANA TRENCH, PACIFIC OCEAN, 11,022 M
2. LONGEST RIVER IN THE WORLD = RIVER NILE, AFRICA, 6670KM
3. HIGHEST POINT ON EARTH = MOUNT EVEREST, NEPAL/TIBET BORDER 8850M
4. MOST ACTIVE VOLCANO = STROMBOLI, ITALY, ERUPTING CONSTANTLY FOR AROUND 2000 YEARS.
5. MOST POWERFUL RECORDED EARTHQUAKE = CHILE, 1960 9.5 ON RICHTER SCALE.

1. TWO COUNTRIES THAT PLAYED IN EURO 2008 HAVE MOST OF THEIR LAND OUTSIDE EUROPE, NAME EITHER.

2. TWO COUNTRIES THAT PLAYED IN EURO 2008 DO NOT HAVE RED ON THEIR FLAG, NAME EITHER.

3. SWITZERLAND AND AUSTRIA HOSTED EURO 2008, WHICH

Key Stage 3 & 4 Results Netball and Football 2007-2008

FOOTBALL

- Year 7 – Runners-up in borough
- Year 8 – 3rd in division
- Year 9 – 2nd in division
- Year 10 – Equal 1st in division

NETBALL

- Year 8 – 4th in division
- Year 9 – 3rd in division
- Year 10 – 2nd in division
- Year 11 – 3rd in division

TABLE TENNIS

- U/14 Champions of Middlesex
- U/16 Champions of Middlesex
- 2nd in English Schools Competition!

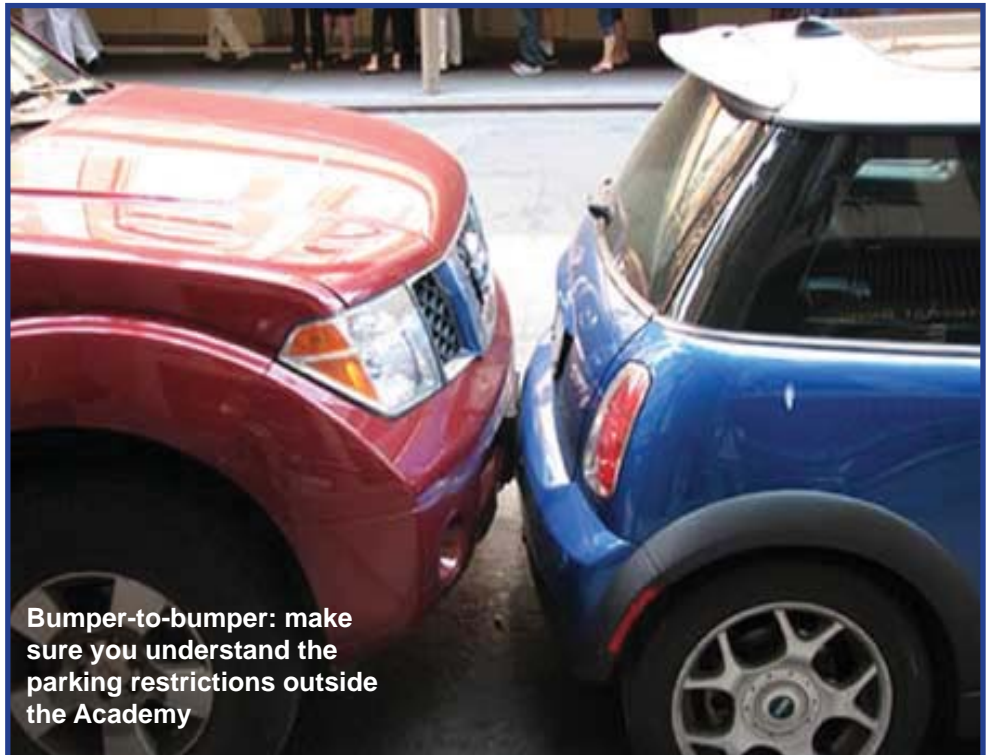


School Parking reminder!

As you already know, the council enforce parking restrictions outside schools to ensure both the safety of the children and congestion of traffic outside.

There has been some confusion surrounding where and for how long parents may stop when dropping off their children.

- At no time can parents/carers stop or drop off children on zigzag lines.
- If the school falls within a Controlled Parking Zone, parents may park in a Residents Bay for 10 minutes, provided during this time a Civil Enforcement Officer can observe that they are dropping off/picking up their children.
- If the school has double yellow lines outside it, parents are allowed five minutes to drop off/pick up their children. Again this has to be observed within the five minutes.
- If there is a load ban in force on the yellow line, parents may not drop off/pick up their children here, they must find an alternative parking and walk.
- If a vehicle is causing an obstruction



Bumper-to-bumper: make sure you understand the parking restrictions outside the Academy

or safety hazard, then will issue a Penalty Charge Notice will be used regardless of the above.

- These rulings apply between 8.30-

9.30am and 3.30-4.30pm.

- Ealing Council enforces the above restrictions using CCTV or Civil Enforcement Officers.

Back by popular demand!

FOLLOWING the success of the May Recital earlier this term, Primary Phase pupils will once again be entertaining audiences with their musical talents.

The choir, Singing Club and guitarists will be performing for 'The Oasis Old Peoples Group', who meet every Wednesday at St Joseph's Roman Catholic Church in Mandeville Road, Northolt. The concert is next Wednesday (July 9) starting at 2pm.

JOIN THE DOTS!

