



2008-09

News Weekly

Issue 7

October 17 2008



West London Academy's weekly newsletter, Informing Parents, Students and the Local Community of Academy events

Be creative and have some fun!

WLA began its Wider Family Learning programme for Parents and Children last Saturday (October 11) with Toy Making by Renzo Laporta.

Renzo has been teaching children and adults how to make toys by recycling everyday waste for many years. He runs workshops in museums, galleries and schools, and is encouraging children to abandon hi-tech gadgets, games and televisions in favour of simpler toys which can be used outside and with other kids.

"I want to inject the fun back into play and by making your own toys you are using your imagination and it is more personal."

Adult Education Manager Michael McCombe said the first class was a great success where "participants not only got to make toys, but they got to play with them also, which was great fun" WLA extends a big thank you to Mrs Denis who came in to help run the class.

Come along this Saturday between 10 am-1pm and have a go yourself.

Puffapouches in stock

Students can now purchase from the Medical Welfare Office a Puffapouch - a trendy lightweight cover that holds your L-shaped asthma pump.

The PE department has already discussed the benefits with students, and the Academy strongly recommends that asthmatics taking physical exercise should purchase one for emergencies or as additional medication.

The Puffapouch can be worn during



games. It is lightweight and comes with a lanyard so it can be worn around the neck. The lanyard has an easy-to-break safety system making it safe to wear.

Made of durable materials it is washable and stops you losing lids so it's clean and hygienic. It also has an identification label so it can be personalised.

The Puffapouch comes in a variety of colours including red, pink, and camouflage. A limited stock of blue is available.

The Puffapouch is available from the Medical Welfare Office at a discount price of £3.99 (£4.99 retail).

SCIENCE CORNER

WITH PROFESSOR WEEKLY



Good Morning Class!

Time for your weekly quiz again!

As always get your answers into Mr Gaza by Wednesday for your chance to win a fantastic prize at the end of term!

1. A tune carrying semen or urine.
2. Organ used to store and break up food..
3. A common acid that is also found in your stomach.
4. Any substance that will return to its original shape and size after it has been stretched or squashed.
5. A way of saying how difficult it is for electricity to flow.

Your clue for this week is:

| | | | | |
|---|---|---|---|---|
| 1 | 2 | 3 | 4 | 5 |
| U | S | ? | E | R |

GOOD
LUCK!

The answers for last week were:

1: combustion, 2: echo, 3: breathing, 4: biodiesel, 5: atom

Community Sports Centre

- Pay and Play football sessions on Tuesday & Thursday, 6-7pm (£1 only). Forms must be handed in to staff before any session can be undertaken.
- Pay & Play Netball will be arriving soon. See Mr Daneshi for all information on all our Pay & Play sessions.
- Watch this space for activities going on at the CSC over the October Half Term holiday (Football Camp, Climbing, Multi-Sports etc).
- 'New Fitness Suite' pay and play sessions started on Monday (13 October) from 5pm-5.45pm.
- 'Extreme Ability' and 'Sound Tennis' sessions are taking place at the Sports Centre every Saturday morning. Activities such as kurling, tri-golf, boccia, wheelchair football and blind & visually impaired tennis are held in the Sports Hall between 9.30-11am for young people and adults with disabilities. See Mr Ackrell for further details.
- If you would like to book a court or pitch after school then see Mr Ackrell or Mr Daneshi for more information.



Soul Searchers: Christian Club

Christians and their friends

Every Monday

Lunch Passes should be collected from:

LS2 before school on Fridays or Mondays

9.4/10.5 breaktime Mondays



2008-09



PRIMARY NEWS

Issue 4

October 17 2008

West London Academy's weekly newsletter, Informing Parents, Pupils and the Local Community of Academy events

Update on ParentPay

You will have read the information about our new ParentPay scheme in the last edition of News Weekly.

Since then you should have also received a letter home outlining further details on the service. ParentPay is a new, highly secure website, www.parentpay.com, with a unique user ID and password, where parents/carers can pay for school meals (cashless system),



uniform, trips, music lessons, revision books, and lots more using your credit and debit cards. This is a free service and there are no additional costs for paying on the inter-

net. To access the website you will need a unique username and password, which will be given to you at the Parents Evening, Monday 24 November.

The Academy still accepts payments by cash and cheque but we encourage as many parents as possible to use ParentPay.

• If you have any further queries please contact the Academy Finance Office.

harvest festival

Our Harvest Festival assemblies for parents will be held on the following days and times:

- Monday 20 October at 9.15 am – Phase 2 in the theatre
- Thursday 23 October at 9.15am – Phase 1 in the theatre
- Friday 24 October at 9.00am – morning nursery and RedClass in Primary Hall
- Friday 24 October at 2.30pm – afternoon nursery and Blue Class in the Primary Hall

Parents, please send contributions of tinned and packet foods for our Harvest collection which will go to Upper Room, a charity that deals with the homeless in London.

Summer Fete success!

The Parent/Staff Association (PSA) Summer Fete raised more than £3,000. Thank you to all those children and parents who attended to make the day a huge success!

We have recently been looking at how to best spend the money and we are considering everything from funding fruit/veg for children in key stage 2, buying games for pupils to use during wet breaks and CD players for classrooms to support the Academy's accelerated learning programme.

Look-out for future editions of News Weekly where we will let you know where the money goes. Look out also for our next fundraising event - it promises to be fun!

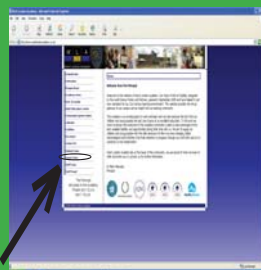
Reminder!

- For health and safety purposes children are not allowed to play on any of the equipment in the playground before or after school.
- Children should also not be left in the playground before 8:40am.
- Can parents in the small playground please stand behind the line when collecting your children at the end of the school day!

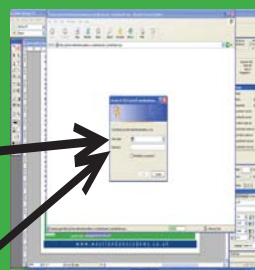
www.westlondonacademy.co.uk

Accessing the Parent Zone

Log on to www.westlondonacademy.co.uk and click on Parent Zone



To access the Parent Zone the user name is **wla\parent** and the password is **zone**



You are now in the Parent Zone!

